

UNIVERSAL LIGHTPROBE™ S2 BLINX DIGITAL SENSOR

Universal LightProbes S2 Blinx Digital Sensors are fast-response-time sensors, designed for the simple ON/OFF test of any color blinking/pulsed or stable LED, for fast results with a digital output.

CHARACTERISTICS

- Response time: <1ms response time; <20mS overall response time
- Signal Output Load: 20mA max. (Source/Sink). Non-inductive
- Wide-aperture Fiber-optic Probe recommended
- Further details on Page 2

ON/OFF RESPONSE

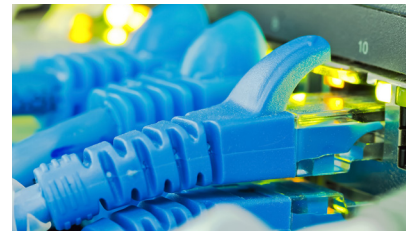
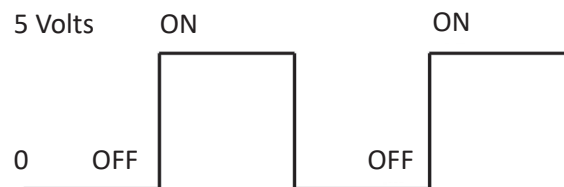
- Tests the ON/OFF status of any color LED, from dim to very bright
- Tests stable or blinking/pulsed LEDs, up to a rate of 15 Hz, typically, and higher rates for brighter LEDs
- Provides a Logic "1" output of 5 volts only if the LED is ON and a Logic "0" if the LED is OFF
- "Color-blind" sensor will check the ON/OFF status of any color LED
- Provides the simplest and fastest 1-bit digital interface to automatic test equipment

INTENSITY

- Blinx Digital Sensors do not provide an intensity output
- Blinx Digital Sensors respond to a wide dynamic range of LED intensity without adjustment
- Will test surface-mount LEDs of 0.125 mcd minimum, at a blinking rate of 15Hz
- Will test finished product LED displays, e.g. RJ45 T-1 / 3mm LEDs of 0.5 mcd min. at a blinking rate of 15Hz, or higher for brighter LEDs



Part Number: ULP-S2 BLINX



UNIVERSAL LIGHTPROBE™ S2 BLINX DIGITAL SENSOR

All Universal LightProbe S2 Sensors share the same form, and are pre-programmed to suit specific LED test requirements. The small size and non-conductive housing is specifically designed to accommodate today's high-density test fixtures. A Wide-Aperture Fiber-Optic Probe is recommended.

BLINX DIGITAL SENSOR CHARACTERISTICS:

Operating temperature range: 0°C to 70°C

Power consumption: Operates from +5, 12, 24 or 28 volts D.C., at 6mA max.

Voltage protection: Withstands up to +40 volts, & reverse polarity to -18 volts

Signal Output Load: 20mA max. (Source/Sink). Non-inductive

Output Pins: 3 gold-plated standard wire-wrap pins (0.025 in. sq.)

Sensor Size: 0.560 in. dia x 1.38 in. long

Operating Temperature Range: 0°C to 70°C

Typical response times: <66mS, shorter for brighter LEDs

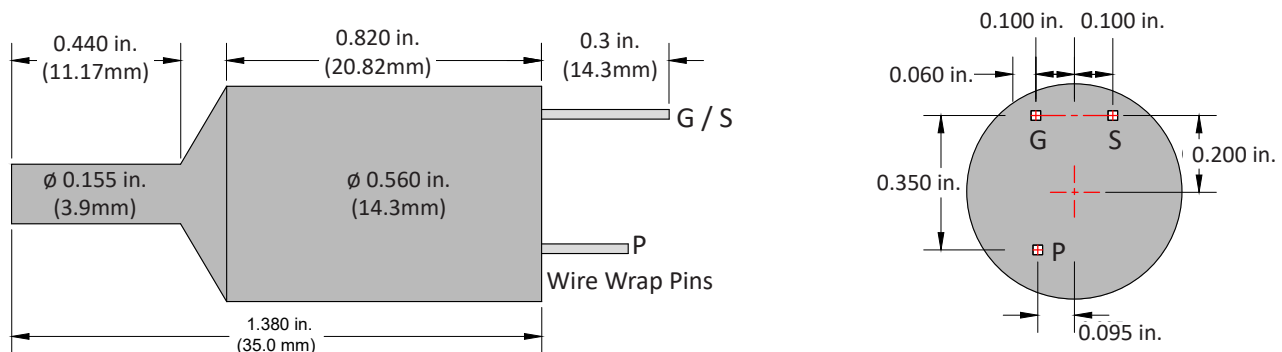
Fiber-Optic Probes: Wide Aperture Fiber-Optic Probe recommended

BLINX DIGITAL SENSORS: Three standard wire-wrap pins

G - Ground: common for digital output and power input

S - Status of LED: ON = Logic '1' (5v); OFF = Logic 0 (0v)

P - DC Power Input: +5, 12, 24, or 28 volts



PO Box 751 • South Freeport, ME 04078 USA | Phone (207) 865-9181 • Fax (207) 510-8039

www.optomisticproducts.com

info@optomisticproducts.com